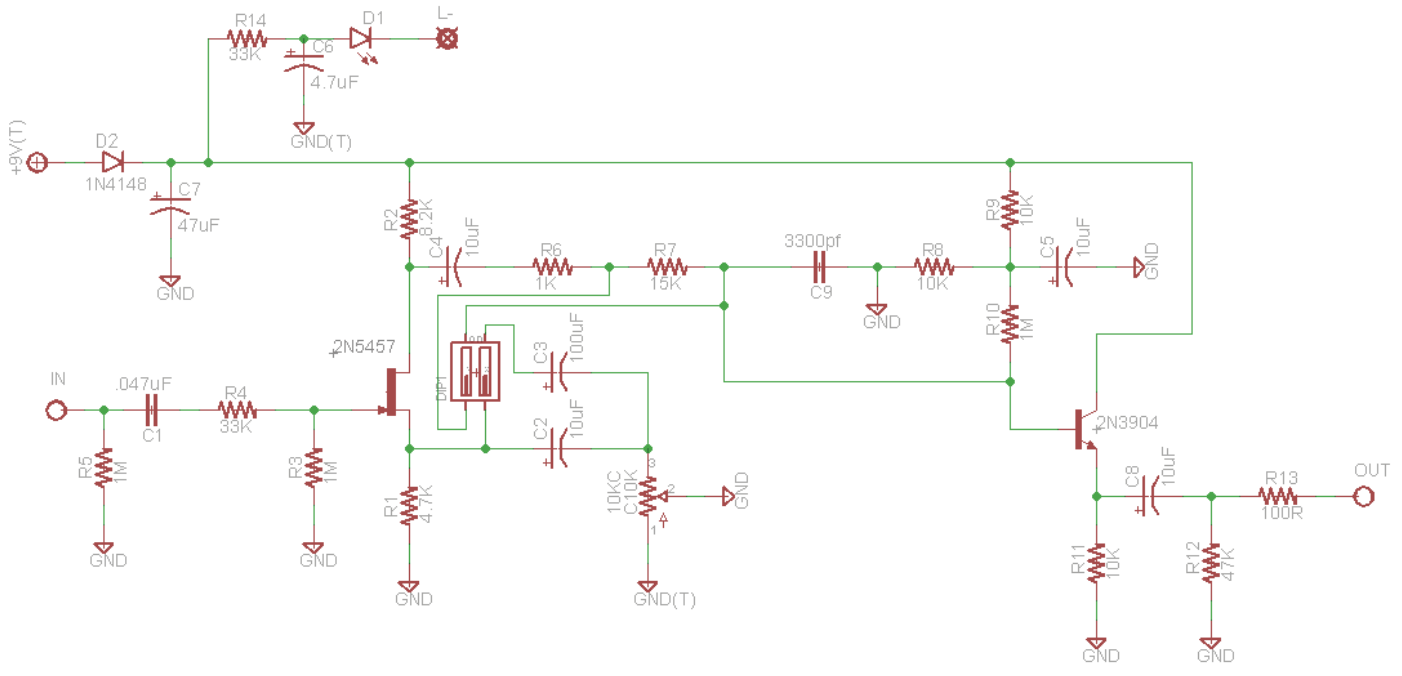
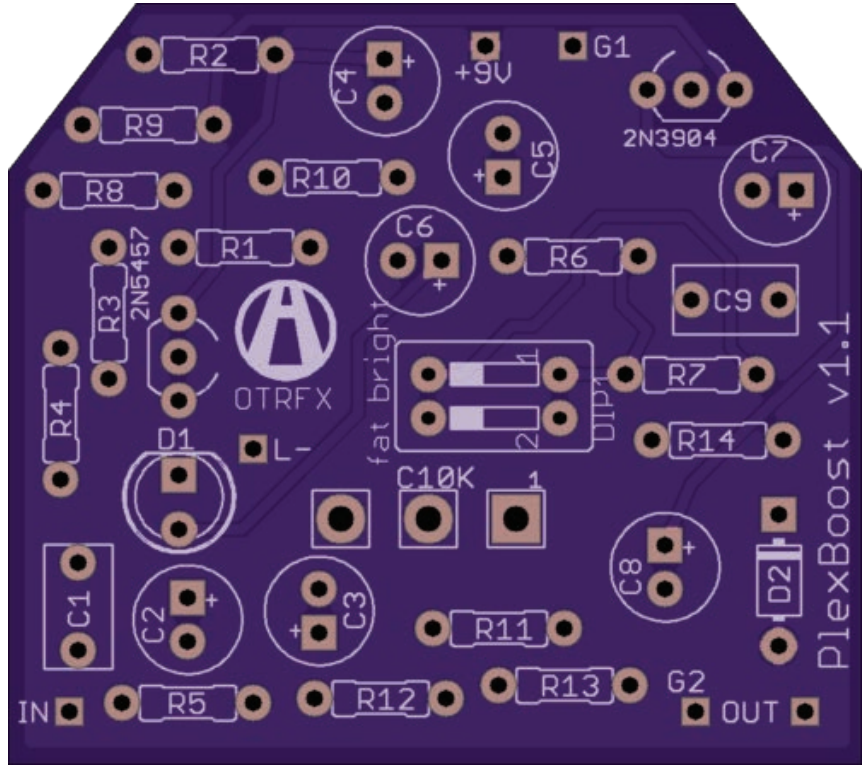


PLEXBOOST (v1.1) Build Guide



PLEXBOOST (v1.1) Build Guide

The PLEXBOOST circuit is based on the Xotic EP Booster circuit, which itself is modelled after the EchoPlex PreAmp stage - a secret weapon of tone used by guitarists like Eddie Van Halen, Jimmy Page, Eric Johnson and others. Even at unity gain the tone is sweetened, making this a great always-on effect. However, it also performs wonderfully as a boost for solos. Happy Boosting!

Resistors

R1	4.7K
R2	8.2K
R3	1M
R4	33K
R5	1M
R6	1K
R7	15K
R8	10K
R9	10K
R10	1M
R11	10K
R12	47K
R13	100R
R14	33K

Diodes

D1	LED5MM
D2	1N4148

Capacitors

C1	.047uF	film-box
C2	10uF	polarized
C3	100uF	polarized
C4	10uF	polarized
C5	10uF	polarized
C6	4.7uF	polarized
C7	47uF	polarized
C8	10uF	polarized
C9	3.3n	film-box

Potentiometers

BOOST	10KC
-------	------

Switches

DIP1
4-pin DIP Switch

Transistors

Q1	2N5457
Q2	2N3904*

* see pg. 4 for transistor notes

GENERAL INSTRUCTION STEPS:

Important: do the assembly in the following order to avoid unnecessary hardship!

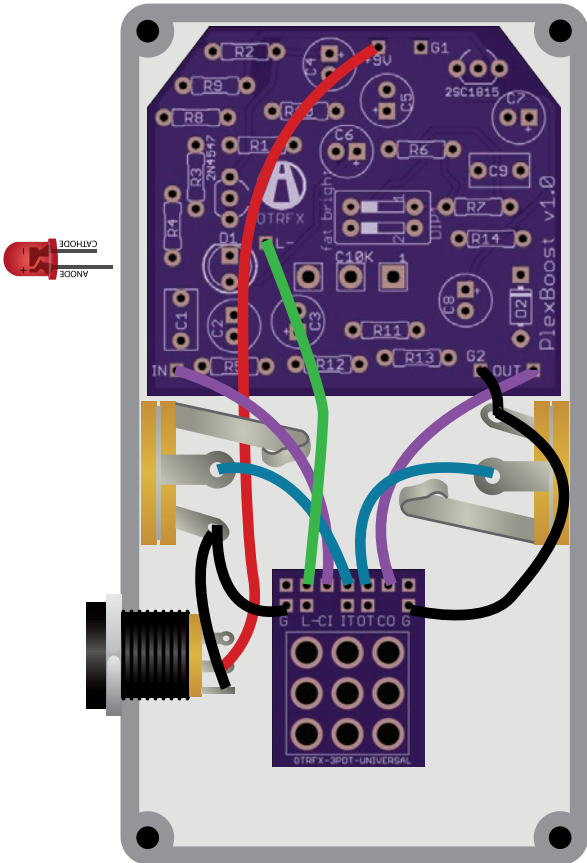


1. Install/solder all resistors & diodes that lay flat on the PCB.
2. Install/solder any sockets (for IC's, diodes, resistors.. anywhere you might want to change a part, value or type).
3. Install/solder any DIP switches (if any).
4. Install/solder all capacitors & transistors.
5. Install/solder ribbon cable connector and/or any other wiring on the PCB which go to the jacks/stomp switch.
6. Install/solder PCB mounted pots & LED (**important:** use pot dust caps or some other non-conductive material to keep back of pots from touching the back of the pcb)
7. Attach/solder wiring to the jacks/stomp switch.

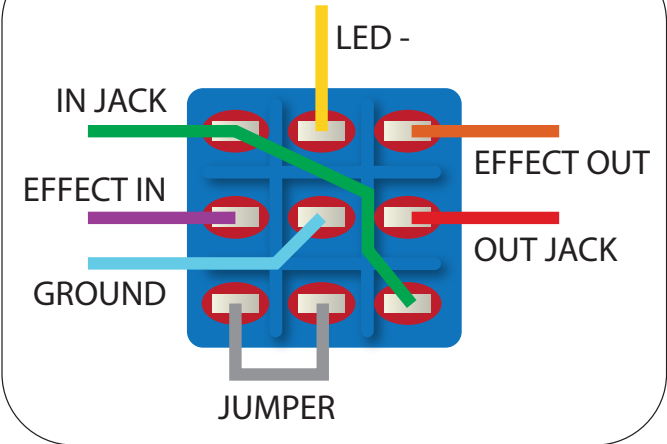
Tips:

- Check to make sure your wiring is complete before firing up the pedal for the first time, especially the 9v & ground wiring.
- Snip your component leads short after soldering. Your solder joints should look like shiny little Hershey's Kisses when finished.
- Socket anything you might want to change, or anything that would be very difficult to remove if faulty (IC's/transistors).

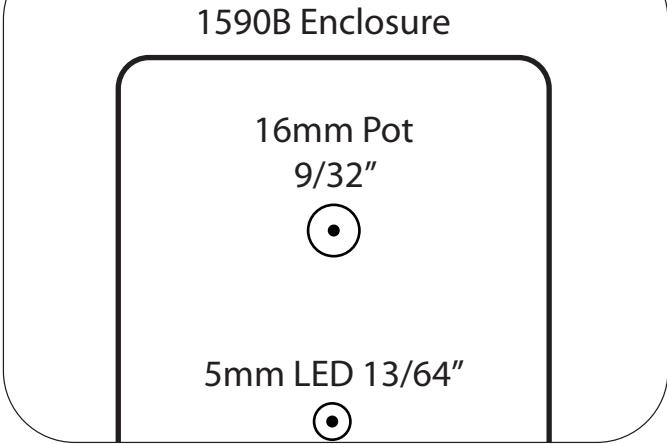
PLEXBOOST (v1.1) Build Guide



True Bypass Wiring



Pots/LED Drill Holes



PLEXBOOST (v1.1) Build Guide

ADDITIONAL NOTES

- GROUNDS: You can use either G1 or G2 on PCB (or both). If you install a top-mounted DC Jack, then connect G1 to the DC jack ground, and G2 to the output jack ground lug.
- If a 10KC taper potentiometer is hard to come by or not in your stock, then a 10KB is a fine substitute.
- Original transistor 2SC1815 may be used instead of the more common 2N3904, however the pinout will be different, so you will need to bend the collector/base pins:



RESOURCES

Parts Ordering: Specialties:

Tayda resistors, capacitors, diodes, sockets, LEDs, pots
www.taydaelectronics.com

Mammoth painted enclosures, knobs, pots, switches, ribbon cable
www.mammothelectronics.com

Smallbear transistors, hookup wire, rare or vintage parts
smallbear-electronics.mybigcommerce.com

Mouser resistors, caps, opamps
www.mouser.com

BLMS switches, knobs, enclosures, pre-wired LEDs
bitcheslovemyswitches.com