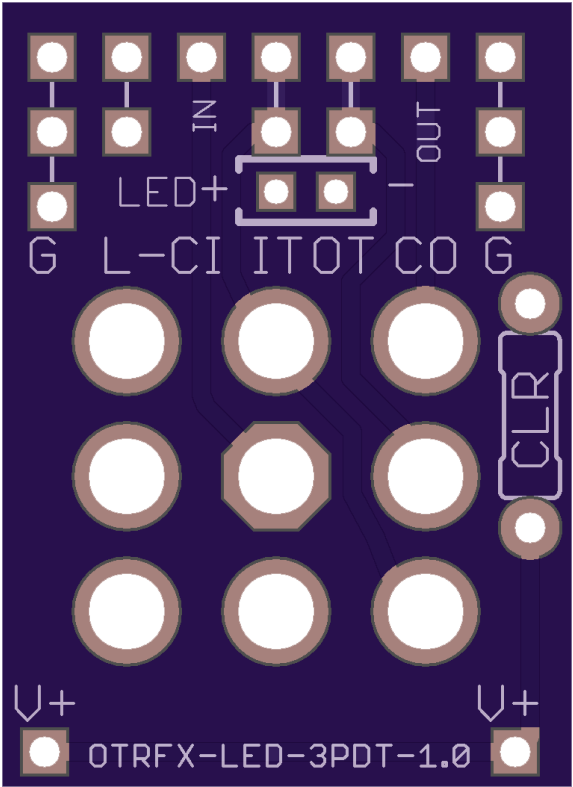




1-COLOR LED 3PDT WIRING BOARD (v1.0) Build Guide

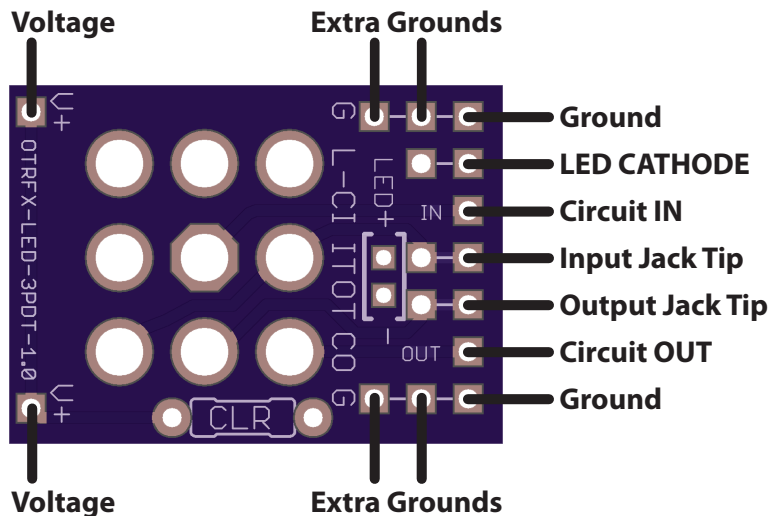


The LED 3PDT Wiring Board from On The Road Effects allows you to wire your pedal stompswitch with ease, and greatly reduces the chance of overheating your 3PDT switches when wiring the solder lugs directly.

Features of our board include:

- True-Bypass wiring design
- ultra small, postage stamp sized footprint
- on-board current limiting resistor (CLR) for LEDs
- six ground pads, and two voltage pads (great for multi effect builds)
- accepts ribbon cable or individual wires
- compatible with regular 3PDT switches and 1-color built-in LED 3PDT switches
- extra LED switching pad for using more than one LED indicator (think *snake eyes!*)

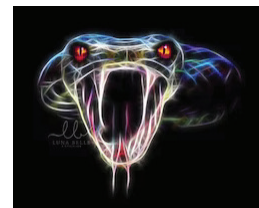
1-COLOR LED 3PDT WIRING BOARD (v1.0) Build Guide



NOTES:

- Install the LED CLR first- a value between 820 Ohm to 4.7k is a good range for most pedals. Lower values = more brightness. A water-clear LED is much brighter than a diffused LED, so 2k-4k or higher might be a good starting point for those.

- If using a standard LED and regular 3PDT (with no on-board LED), wire the LED leads to the two pads outlined in white brackets, with anode to "LED+" and cathode to "-". (you can still use multiple indicator LEDs using the two extra LED Cathode pads, just wire all the LED anodes together (think *snake eyes!*)).



- If using a 3PDT with on-board LED washer, insert the two LED pins into the two small LED pads closest to the 3PDT stomp switch pads, as shown below:

