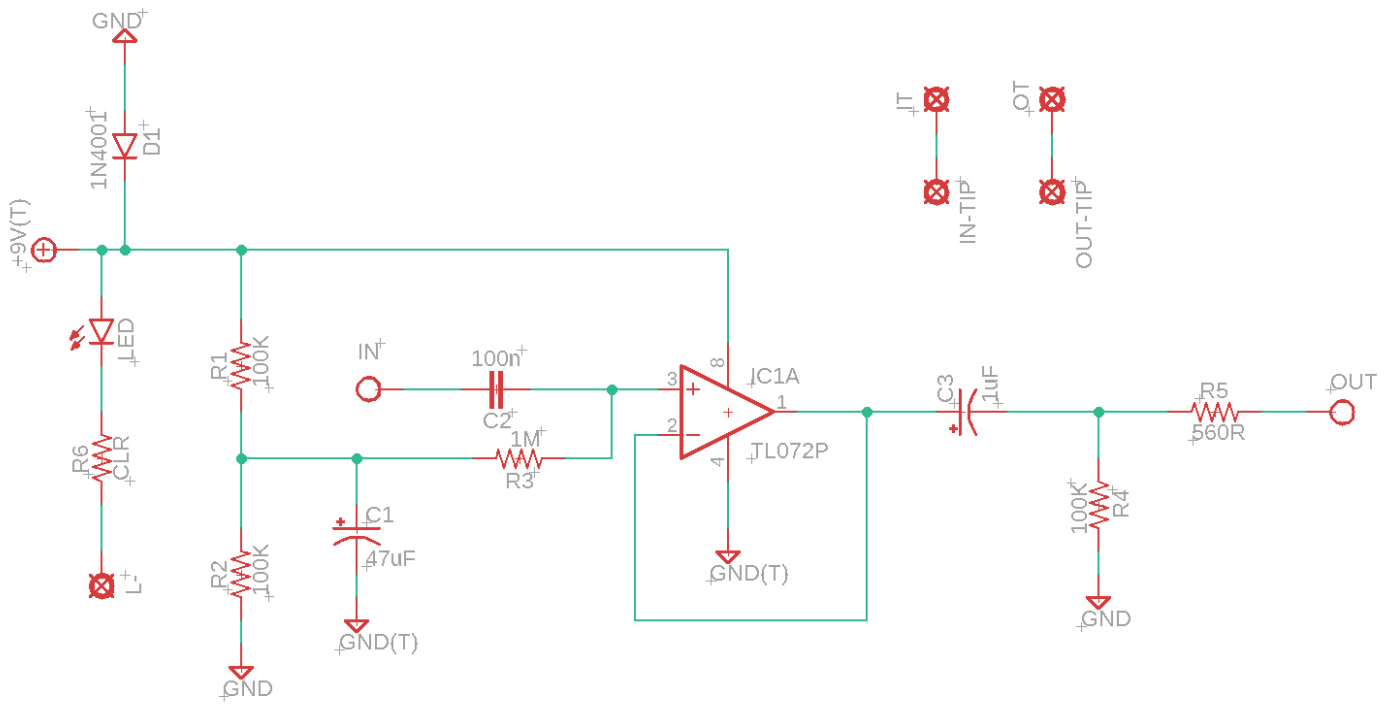
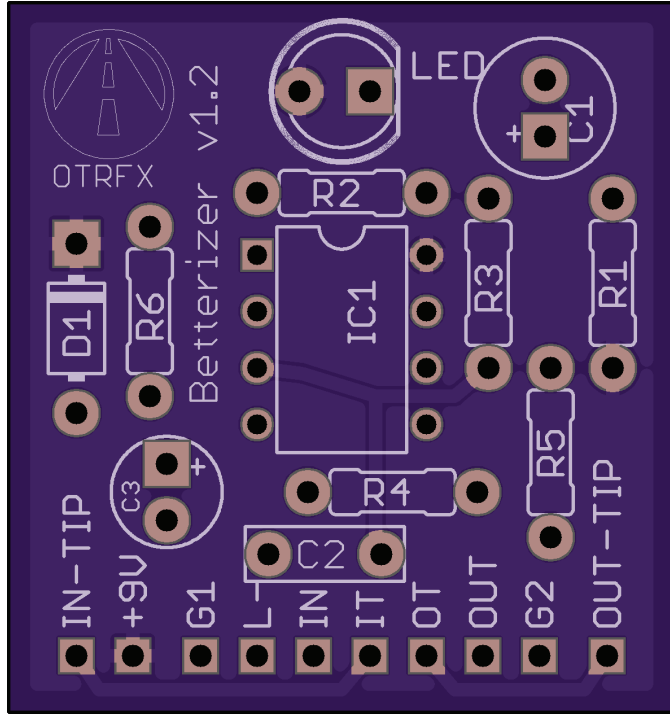




Betterizer (v1.2) Build Guide



Betterizer (v1.2) Build Guide

If you're using long cable runs, or have a pedal board full of true-bypass pedals, your signal could become weak and muddy due to increased capacitance.

The Betterizer is a buffer circuit that restores the full strength of your pickups by converting the signal from high impedance to low impedance. It presents your amp with the true sound of your pickups, as if your instrument was plugged directly into the amp with a short cable. Try it at the beginning and end of your pedal chain.

This circuit is taken directly from the buffer section of the *Klon Centaur overdrive*, and you can expect a subtle sparkle, clarity and almost three-dimensional quality to the upper frequencies of your tone.

You can build this in several different ways:

Resistors

R1	100K
R2	100K
R3	1M
R4	100K
R5	560R
R6	CLR*

Diodes

D1	1N4001
D2	LED

Capacitors

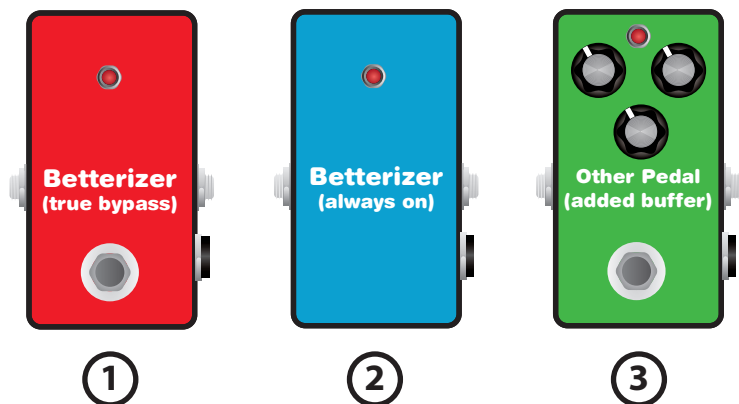
C1	47uF	ELECTRO
C2	100n	FILM
C3	1uF	ELECTRO

IC

IC1	TL072
-----	-------

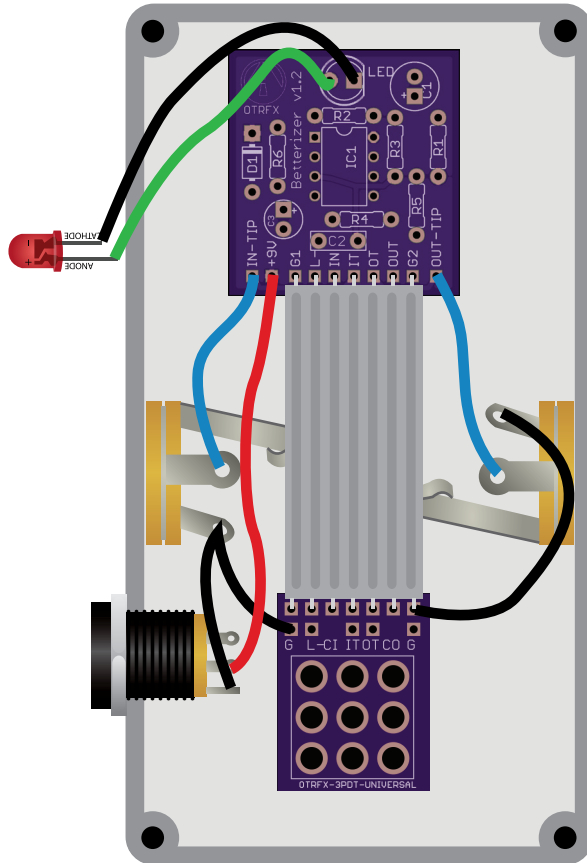
1. Standalone pedal with true-bypass on/off stomp switch.
(Easily compare the effectiveness at various placements on your pedal board)
2. Standalone pedal with no on/off switch (always on).
3. Wired into an existing pedal with no buffer circuit.

(see wiring pages for details)

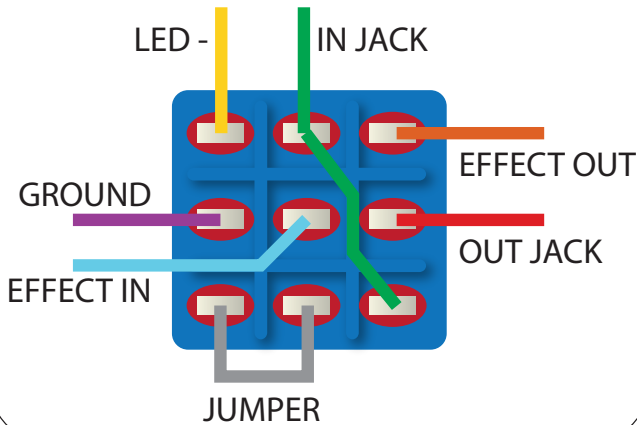


* CLR = Current Limiting Resistor for the LED.
1k - 4.7k depending on desired brightness.
(lower resistor value = brighter)

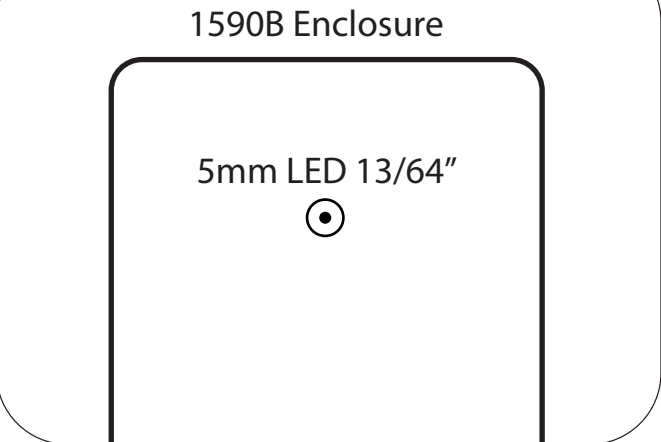
Betterizer (v1.2) Build Guide



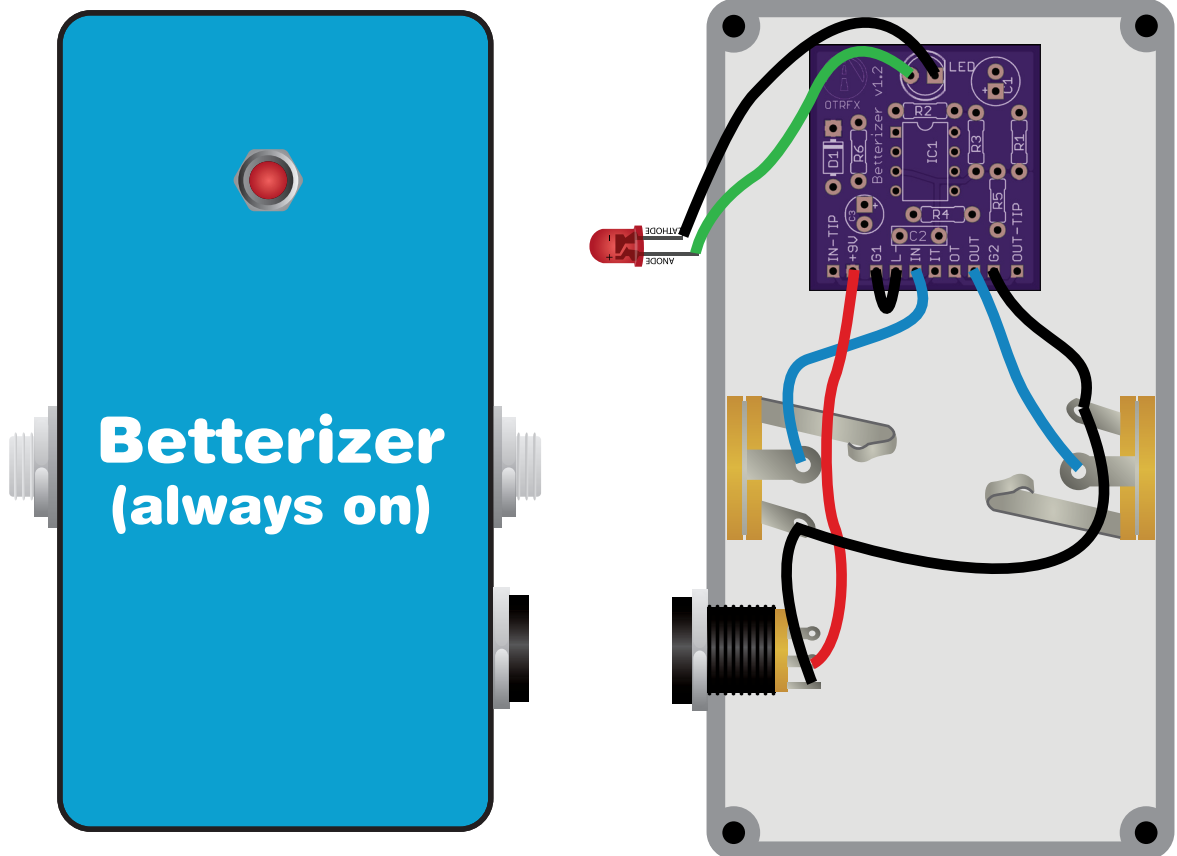
True Bypass Wiring



LED Drill Hole

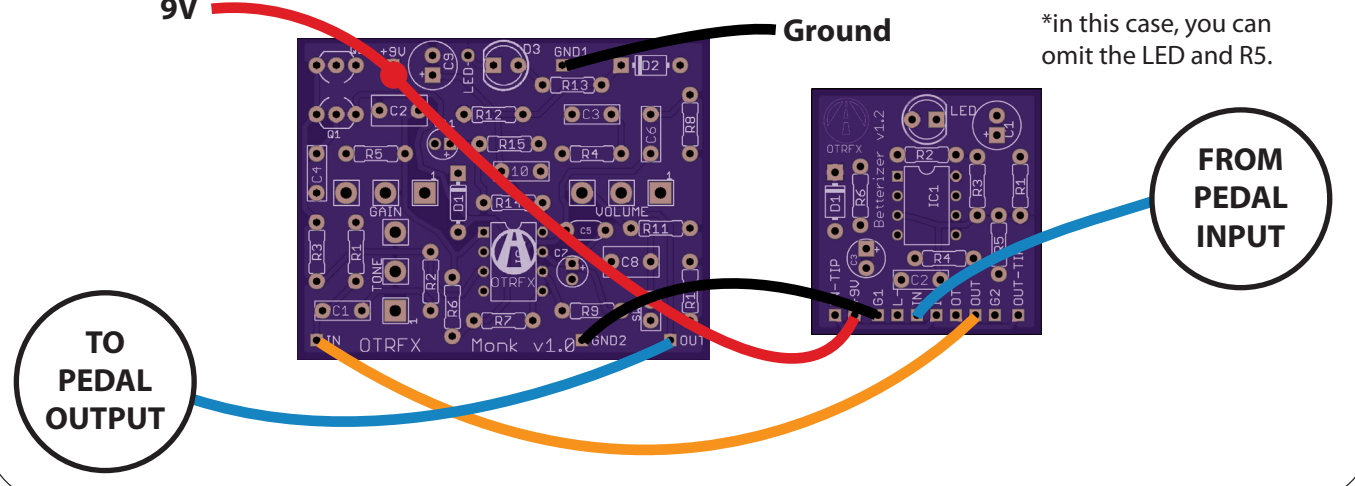


Betterizer (v1.2) Build Guide



Wiring into an existing pedal

(Betterizer in front of another circuit)



Betterizer (v1.2) Build Guide

GENERAL INSTRUCTION STEPS:

Important: do the assembly in the following order to avoid unnecessary hardship!



1. Install/solder all resistors & diodes that lay flat on the PCB.
2. Install/solder any sockets (for IC's, diodes, resistors.. anywhere you might want to change a part, value or type).
3. Install/solder any DIP switches (if any).
4. Install/solder all capacitors & transistors.
5. Install/solder ribbon cable connector and/or any other wiring on the PCB which go to the jacks/stomp switch.
6. Install/solder PCB mounted pots & LED
(Important: use pot dust caps or some other non-conductive material to keep back of pots from touching the back of the pcb)
7. Attach/solder wiring to the jacks & stomp switch.

TIPS:

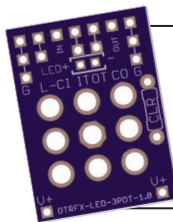
- Check to make sure your wiring is complete before firing up the pedal for the first time, especially the 9V & ground wiring.
- Snip your component leads short after soldering. Your solder joints should look like shiny little Hershey's Kisses when finished.
- Socket anything you might want to change, or anything that would be very difficult to remove if faulty (IC's/transistors).

RESOURCES:

Parts Ordering:	Website:	Specialties:
Tayda Electronics	taydaelectronics.com	resistors, capacitors, diodes, sockets, LEDs, pots, knobs
Mouser	mouser.com	resistors, capacitors, IC's
Love My Switches	lovemyswitches.com	switches, knobs, enclosures, pre-wired LEDs



PEDAL BUILDER'S VECTOR PACK
Plan, design, test-fit, & print your DIY pedals with ease!
Visit ontheroadeffects.com



HATE WIRING STOMPSWITCHES?
Stock up on our handy 3PDT wiring boards!
Visit ontheroadeffects.com